

Autumn Census 2025 – Known Issues

Filesets

3103 – All Phases

All Phases:

- 1859 - Funded hours plus any extended hours cannot be more than the hours at setting
- 3032 - Funded hours plus any Expanded hours cannot be more than the hours at setting
- 1925Q - Please check: Pupil no longer on roll record should not be submitted if there is no attendance, suspensions, permanent exclusions, AP placement details, learner funding and monitoring or post-16 data for the required period

Secondary Phase:

- 2775Q - Please check: The sum of planned learning hours and the planned employability, enrichment and pastoral hours is lower than 40. Total planned hours should reflect the annual planned hours for the academic year
- 3030Q - Please check: English GCSE grade achieved is 'D'-'G' / '3'-'1', 'U' or 'NR' and the student is recorded as not having a funding exemption. If the student is not undertaking a valid English qualification that meets the condition of funding or you have not recorded this re-take in the student's learning aim record, they may have funding removed for being non-compliant with the condition of funding.

Availability Status

- **SIMS Connected:** applied by ESS
 - **ICT Zone:** available for download
 - **On Premise SIMS:** SIMS/ Manifest File folder.
-

3104 - Secondary Phase Only

Improving the accuracy of validation errors **4043** and **4044** for post-16 pupils:

- 4043 – Maths GCSE Grade Validation
Triggered when a student has a grade of 'D'-'G' / '3'-'1', 'U' or 'NR' and no funding exemption.
→ Maths minimum hours must be present
- 4044 – English GCSE Grade Validation
Triggered when a student has a grade of 'D'-'G' / '3'-'1', 'U' or 'NR' and no funding exemption.
→ English minimum hours must be present

Availability Status

- **SIMS Connected:** Not yet available
- **ICT Zone:** Not yet available
- **On Premise SIMS:** Not yet available

Consolidated Database Patch 2 (CDPsu2)

Please note: Secondary Schools in England did NOT need Consolidated Database Patch 1 (CDPsu1)

The improvement is an enhancement for schools with post-16 pupils.

Programme of Study Calculation – England

An issue has been identified where Programmes of Study did not include learning aims planned to end after the Census Reference Date.

Resolution:

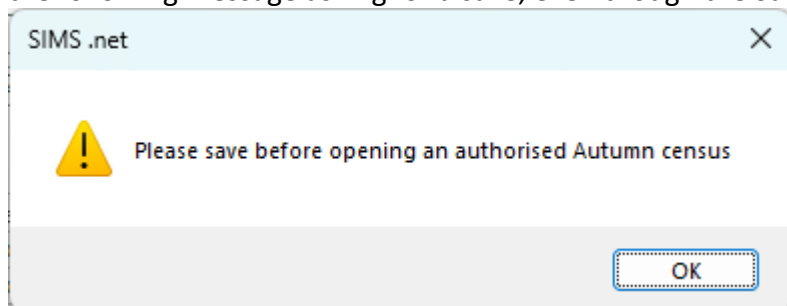
CDPsu2 corrects this issue. After applying the patch, the calculation will now include programmes with learning aims planned to end after the Census Reference Date.

Availability Status

- **SOLUS 3:** Not yet available
- **SIMS Connected application:** Not yet available

Calculation of the Learning Aims panel for post-16 pupils

ESS update 30/10 - Although clicking on the Calculate All Details button in the Census Details panel successfully calculates and recalculates all calculated panels, including the Learning Aims panel, the Learning Aims panel cannot be recalculated on its own via the Recalculate button in the Learning Aims panel once the contents of the panels have been saved. Instead, clicking on the Recalculate button triggers the following message asking for a save, even though the Save button is greyed out.



ESS are looking into providing a solution to this issue, but for the moment, we suggest the schools with sixth forms deal with the Learning Aims panel first, so that Calculate All Details cannot remove changes made in other panels.