



RE@Bucks

Newsletter for RE Leads in Buckinghamshire

Spring 2026

Bucks SACRE



Newsletter January 2026

Happy New Year! We hope that you all had a good Christmas break and arrive back at school at least refreshed if not fully rested; it is hardly a quiet time of year! These are increasingly interesting times for RE, as we look to see if agreement can be found to move RE into the new National Curriculum. More on this later!

Professional Development

There are plenty of opportunities for CPD for RE teachers, either in the shape of training events, or online support and resources.

Local Networks

Primary Local Networks

Primary RE Teacher networks are held termly and this year there will be two separate meetings one North and one South. You can choose which to attend, depending on your school and/or where you live. These networks are designed to help you as teachers share what you are doing, raise questions, contribute ideas and express concerns/issues, so that you can support each other. They are also a means of CPD and of keeping up-to-date. **They are all hybrid**, though attending in person has a real advantage, and run from **4-5pm**.

Spring Term

Tues 3/2/26	South	Chesham Bois	Sarah Pimenta
Thurs 5/2/26	North	Coleshill Infant School	Kath Wijayatilleke

- Sharing news, issues, ideas and practice
- The Curriculum and Assessment Review: How will this affect RE?
- The agreed syllabus update.

Summer Term

Tues 9/6/26	North	Venue tbc please volunteer!
Thurs 11/6/26	South	Venue tbc please volunteer!

If you are not yet on the mailing list, email Tahira Parveen(tahira.parveen@buckinghamshire.gov.uk) to be added.

Secondary Networks 4.30-5.30pm

These are run for all secondary schools and there will be one each term.

Spring **11/3/26** hybrid – venue tbc

- Sharing news, issues, ideas and practice
- Discussion of implications of CaAR Report

- Agreed Syllabus update

Summer 2/7/26 hybrid – venue tbc

Reminder: Farmington Scholarships 2026-27



FARMINGTON
SCHOLARSHIPS

for head teachers and teachers of Religious Education and
associated subjects

These have been career changers for some and professional boosts for everyone involved. This is probably the CPD Gold-Standard not just in the RE world, but in education as a whole. They are fully funded and allow for research into an area of interest to you. **The closing date for applications is Sunday 25th January 2026.**

Follow this link: [Scholarships - Farmington Institute](https://www.farmingtoninstitute.org.uk/scholarships)

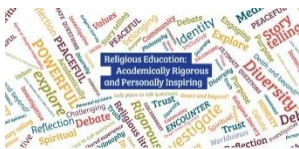


National Association of Teachers
of Religious Education

We keep repeating this, but membership of NATRE is such a good source of support and development. Individual

membership runs from £90 per year and school membership from £170.

<https://www.natre.org.uk/membership/schools/> This includes a termly mailing and access to materials on their website, plus discounts. They have recently re-vamped their website which is easier to access – I believe this is called ‘user-friendly’! Hence the new logo.



Specific aspects include:

A monthly webinar for those [new2RE](https://www.natre.org.uk/membership/schools/) plus other courses, support and resources.

The site is open access, but membership gives greater support and materials.

Reminder: Strictly RE 2026 – NATRE is still taking bookings for Strictly RE, but there is as yet no published deadline, so check on their website and book as soon as possible! If it helps at all, I am going!

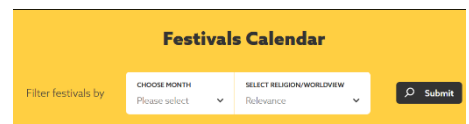
<https://natre.org.uk/events-courses/strictly-re/#FBFORM>

REOnline also provides excellent support both for subject leaders and for teachers. Have a look at **their Leadership scholarship Programme**. Applications for the **2026-2028 Leadership Scholarship Programme will open on 16th January 2026 and will close on Friday 27th March 2026**. They will be holding a [webinar](#) on Tuesday 10th February 5.30-6.30pm. Is this something you feel would help in your next career move?



Their **newsletter** is well worth subscribing to. The most recent one (Dec 2025) provided a useful link to a BBC series [‘Prayer and Reflection’](#), available on I-Player.

They also provide a searchable **festival calendar**, based on the Shap festival calendar. Link to the [Festival calendar](#)



Lent and Ramadan 2026

It is interesting to note that Ash Wednesday and the first day of Ramadan fall on the same day, 18th Feb. This provides an excellent opportunity to reflect on common themes (eg fasting, reflection, striving to be the best you can be) and concepts (eg sacrifice, spiritual, community), linking these to lives of Christians and Muslims and building bridges to the pupils’ lives and worldviews, and also to current global issues. This could be in RE lessons, or in collective worship/assembly and possibly exploring these across the curriculum to [promote SMSC](#).



Free Welcome to Worldviews CPD sessions in Spring Term 2026

Jigsaw RE's Welcome to Worldviews series is specifically designed to help empower teachers to teach high quality RE by addressing the two key issues of subject knowledge and teacher confidence. By providing free, worldview specific webinars, delivered and written by our team of specialist RE advisors, we aim to provide more teachers with the CPD they need to confidently fully embed a range of worldviews in their RE curriculum. Children will therefore gain a broader understanding of the world around them, as well as develop their own worldview, enabling them to foster tolerance and respect in their day-to-day lives.

These are open to all teachers and do not necessitate being a 'Jigsaw School'.

Access their free webinars [here](#)



I am sharing two further aspects of the REHubs website this term:

1. News and Blogs: <https://www.re-hubs.uk/upskill/find-the-latest-re-rve-r-w-news-blogs/>
2. How to get involved: <https://www.re-hubs.uk/get-involved/get-involved/>

Up-coming national events:



Holocaust Memorial Day Tuesday 27th Jan 2026

'Bridging Generations' <https://hmd.org.uk/hmd-theme-2026/>

'The theme for Holocaust Memorial Day (HMD) 2026, 'Bridging Generations', is a call-to-action. A reminder that the responsibility of remembrance doesn't end with the survivors - it lives on through their children, their grandchildren and through all of us. This theme encourages us all to engage actively with the past - to listen, to learn and to carry those lessons forward. By doing so, we build a bridge between memory and action, between history and hope for the future...

Bridging Generations highlights the crucial role of the next generation in preserving the memory of the Holocaust and carrying it forward. It highlights the power of intergenerational dialogue – of listening to those who came before us and of sharing those stories with those who come after. In doing so, we don't just preserve memory – we connect it to the present.'

School resources can be found [here](#).

Holocaust Educational Trust

The Holocaust Educational Trust also provides programmes, resources and training. [Holocaust Educational Trust - Outreach Programme \(het.org.uk\)](https://www.het.org.uk)

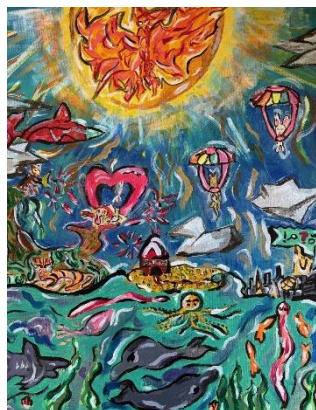
You can access their annual webcast here: [HMD Webcast 2026 – Thursday, 22nd January 10:00 – 11:00](#)

Spirited Arts 2026

<https://natre.org.uk/spirited-arts-main-page/spirited-arts-2026/>

The new 2025 themes:

- Faith in our future, hope in our future
- Prayer for all that lives! Animals, Earth, God
- Open Bible!
- Searching for God
- Sacred spaces
- Children of God



Curriculum and Assessment Review Report

As I am sure you will be aware, the CaAR report published in November recommends that RE become part of the new National Curriculum and the Government has said responded positively to this:

'We welcome the Review's work on RE and the careful consideration that the Panel has given, both to how better to support the teaching of the subject, and its potential inclusion in the national curriculum.

We will be shaped and guided by the sector on this important issue and, to take further steps on moving forward, there will need to be a clear shared position from the sector on the future of RE.

Sector consensus should include views from faith, non-faith and wider school stakeholders on an RE curriculum that could be deliverable within all schools as part of a well-sequenced and structured national curriculum. If the sector reaches a consensus on whether this is achievable, we will consult on the content of a draft RE curriculum and on proposed changes to the legislative framework within which RE sits. As part of this we would seek to ensure that sector consensus should underpin future updates to any new RE curriculum.'

Over this term a task and finishing group will be consulting on how, if at all, to take this forward and will report back to the government by the end of March. There is a real momentum behind this move because, especially within the educational climate and context there are real benefits that it can bring to both teachers and pupils. However, there is also a recognition that it brings potential risks and challenges, with some in particular concerned about RE being controlled by national government. The earliest that any National Curriculum will be ready is Sept 2028, so we will continue with our refining of the agreed syllabus.

Another significant recommendation was that the DfE should consider removing the statutory requirement for learners in school sixth forms to study RE.

SACREs will continue to support RE locally and build upon the background to well-structured agreed syllabi to support schools in implementing any National Curriculum RE that may be agreed.

Culham St Gabriel's produced this conversation in response

<https://www.youtube.com/watch?v=6DS0SoZiQ-I&t=918s>

And both [NATRE](#) and [NASACRE](#) each produced a response which you can access.

The full report and the government response (scroll down to near the bottom) can be found [here](#).

Bucks Agreed Syllabus update

This will continue as planned, as the main changes will only be in KS3 and this will help secondary colleagues to collaborate on what makes for high quality KS3 and how the Challenging RE can be improved in this area as well as how the structures of the syllabus can help promote deep and meaningful KS3 RE.

The Writing Panel will meet this term and next to focus on improving Enquiries and support materials. We will consider how we can have less statutory and more guidance materials, enabling schools then to devise their own enquiries, or adopt or adapt those in the agreed syllabus support materials.

As part of our preparation for reviewing the Agreed Syllabus, we are asking ALL schools to complete a short questionnaire with their pupils. You can find the links to the appropriate Key Stage questionnaires below:

Upper Key Stage 2 SACRE pupil Questionnaire – Fill in form

Key Stage 3 Pupil Questionnaire – Fill in form

Key Stage 4 Pupil Questionnaire (Y9-11) – Fill in form

Key Stage 5 Pupil Questionnaire (post 16) – Fill in form

We will keep you updated through the termly network meetings.

SACRE will continue its work of supporting and monitoring the provision of RE in Buckinghamshire schools. We would love to hear from you! **If you would like to contribute to the next newsletter, or have a suggestion for a pedagogical theme, or want to share something with other schools, please get in touch!**

Best wishes for the new year!

Bill Moore

Adviser to SACRE

bjvmoore@justbmoore.com

Previous editions of the newsletter can be found [here](#).

Have you joined the OxonBucksRE local Facebook group? If not, you can do so by clicking [here](#).

